



Breedweer Facility Management The Netherlands.

Case study



Breedweer Facility Management & ICE i-Synergy for OMO schools.



Breedweer Facilitair and the circular cleaning machine. Breedweer, together with its partners KBL Circular Cleaning Centers and Blu-Me, is developing a new circular economy. For Breedweer, corporate social responsibility means looking at what is good for people and society, but of course also for the environment. In this regard, Breedweer is taking the lead in making its Facilities services as “blue” as possible. This means that they strive for a cycle without waste, where waste is the raw material for a new product, the philosophy of ICE Robotics with its i-Synergy cleaning machines is very much in line with this. It is for this reason that smart cleaning machines from ICE have now been deployed at many Breedweer locations via KBL Circular Cleaning Centre.



THE CHALLENGE

Sustainability.

According to Jack Stuifbergen and Cindy Broersen, the driving forces behind the Northern of the Netherlands based company, several answers actually apply to this question. "Look, if you want to implement a circular economy or philosophy in your business, you have to look at all facets of a product; so from the origin to the phase

in which the product has come to the end of its lifecycle, for us the most important thing is that our partners think about this total cycle, where the starting point is that the product can be regenerated again into a new product," says Jack.





“That requires quite a bit from a supplier or manufacturer of a product. With our in-house supplier Hilco Kooistra of KBL Circular Cleaning Center, we spar each time about how we can take just one more step forward in our mission. Sometimes these are really big challenges because not every company wants to pay more for sustainability. And they don’t have to, there are plenty of materials and resources that are sustainable and often they are even more economical if you look seriously at the cost per use. However, our clients find these distinctive values very interesting, we make an impact with them every day, added social value is Breedweer!”



It is not for nothing that Breedweer has been nominated for the European Cleaning & Hygiene Awards 2018 in the Sustainability and Personnel category. “Hilco convinced us with these 3 important pillars of the ICE i-Synergy concept which moved from our sustainable philosophy to start with the deployment of ICE i-Synergy machines.



Cloud Based
Technology



Fleet
Management



Lithium-ion
Battery



Data-proof
Cleaning



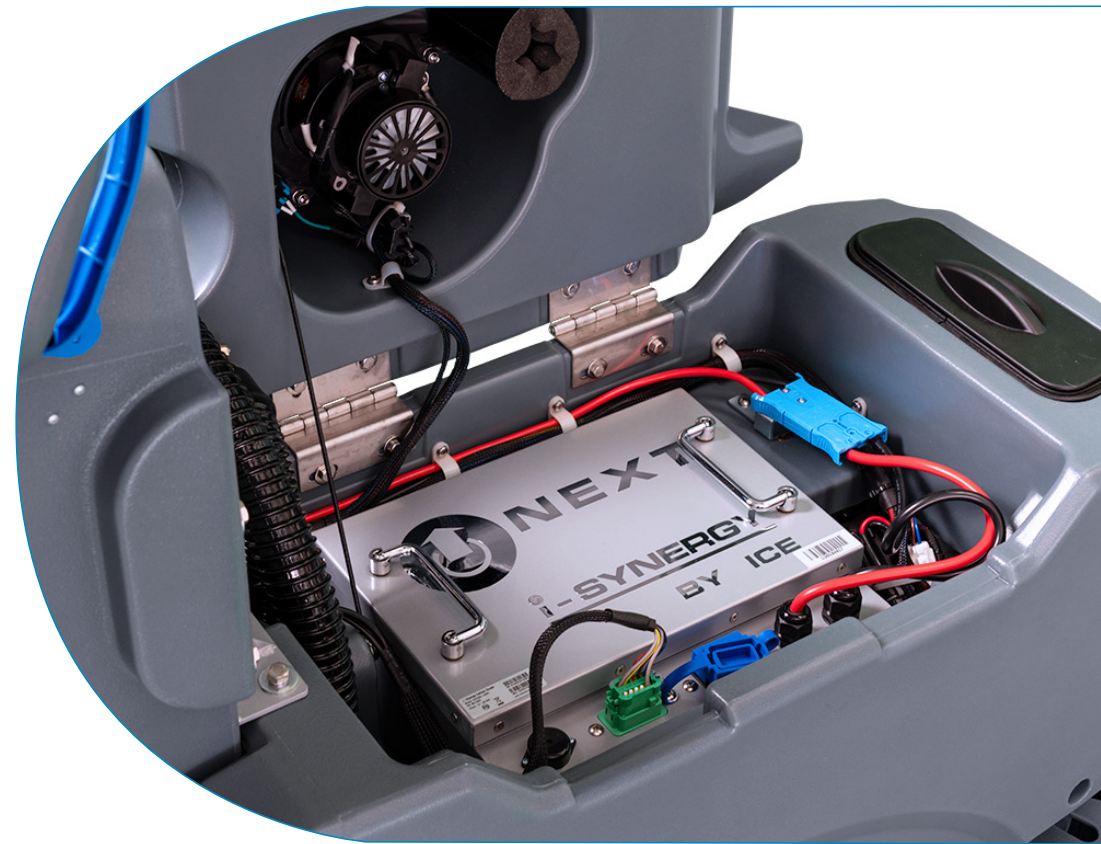
Pro-active
Maintenance

SMART CLEANING

Recyclable Batteries.

The ICE i-Synergy machines are built very sustainably and always equipped with a fully regenerable Lithium-ion battery with a very long life (up to 8x longer than traditional batteries). The battery is manufactured with much less toxic materials than traditional traction batteries and can be refilled with new cell material at ICE's factory after the end of its life, reducing the waste stream.

The replacement of these Li-ion batteries over traditional batteries reduces the waste stream to a minimum!



The cleaning machine will be sent for recycling at the end of its life to a specialized recycling company that regenerates 100% of the machine into usable materials that contribute to the production of new cleaning machines.

Smart machines and
smart maintenance make
service super efficient.

SMART AND SMART Efficient.

The i-Synergy machines are linked to the Internet and are monitored remotely. If there are specific deviations on electrical components, they can often be spotted in advance. Often, a telephone instruction can help the user before it becomes a real problem, thus preventing downtime.

The service department does not need to be called out for minor faults and this saves many unnecessary kilometres. In addition, the service is cleverly tuned to running hours, the machine itself indicates when service is required, which means that the service department can work super efficiently and can schedule in advance on the basis of smart diagnostics, which also saves many unnecessary environmentally harmful kilometres.





REMOTE TECHNICAL MONITORING

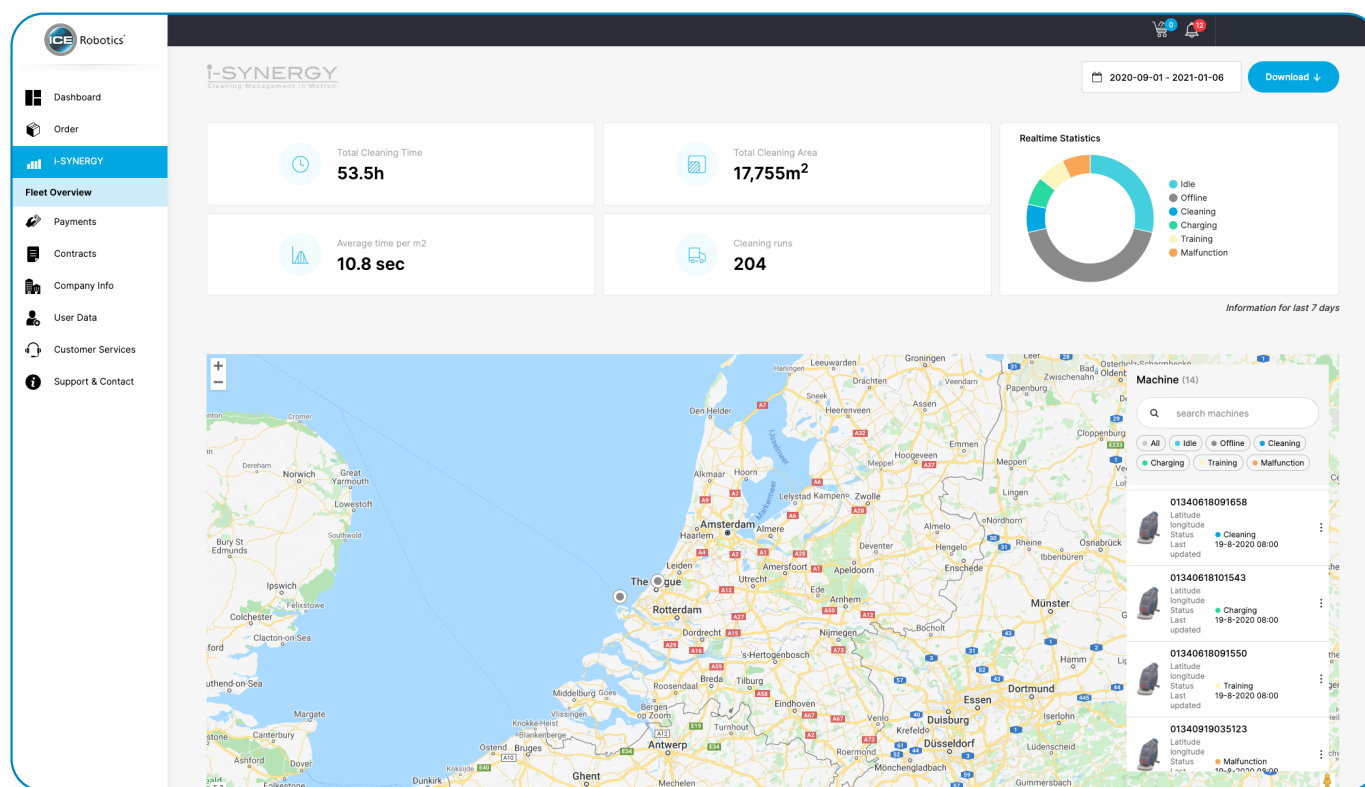
Flexibility.

The new economy requires adjustments to existing ways of doing business. Clients demand transparency on issues such as waste stream processing (and recycling) and on how to control quality, results and other mutually agreed upon targets. The ICE i-Synergy machines collect

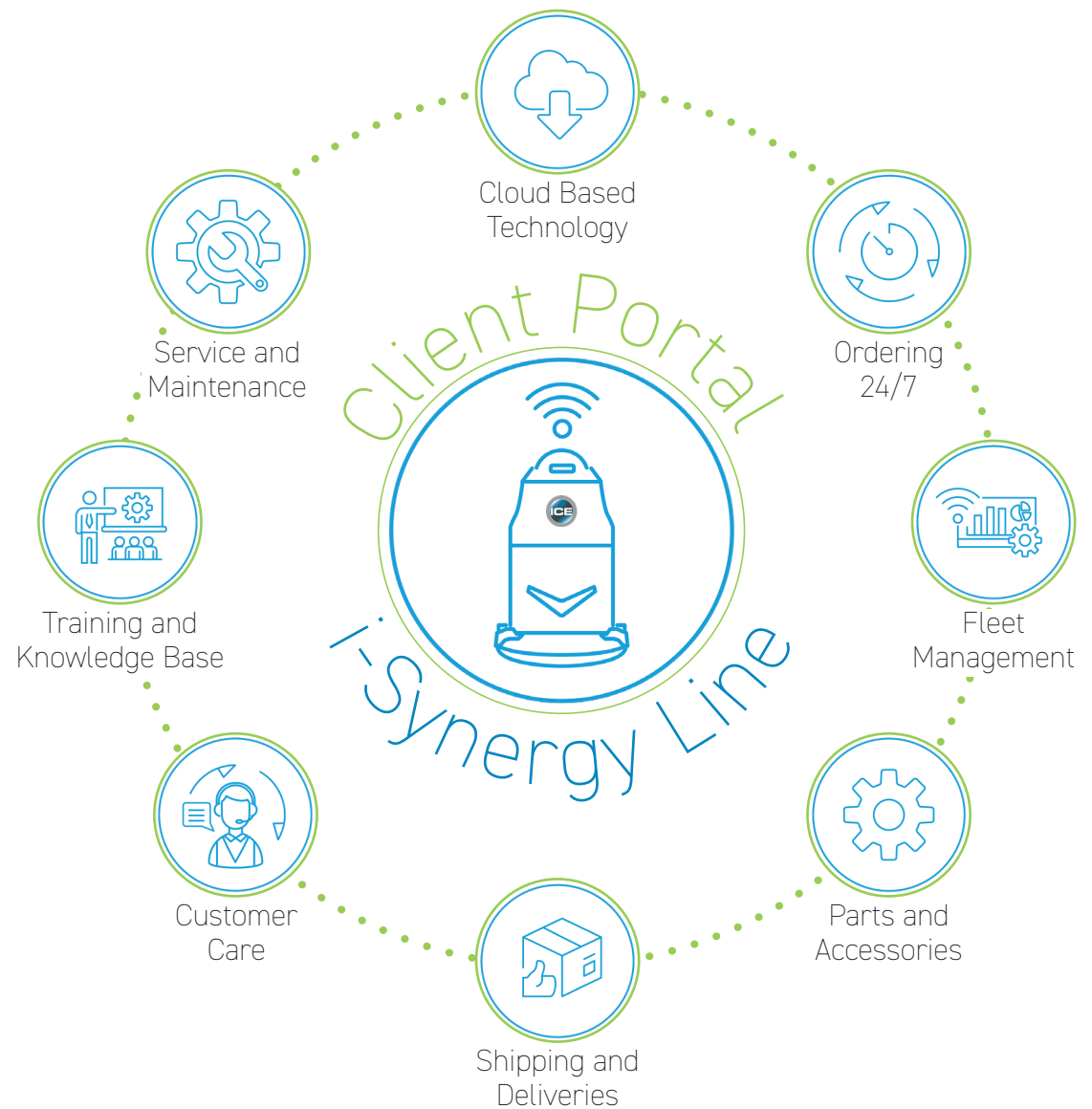
user data from the machine with the help of smart technology.

With these tools it is very easy to actually guarantee the quality of floor maintenance.

Adjustments based on facts are easier than assumptions. The flexible use of the machines, which you don't buy but rent full-service including all parts and wear parts, means that you can work with clear calculations in advance and there are no hidden costs.



In addition, the machine can be returned when the contract ends or, for example, when a location is closed. No more expensive idle cleaning machines in the warehouse when these situations occur. The cleaning machine can be used elsewhere, which fits in perfectly with a sustainable policy. Having a fixed cost-in-use in advance without unpleasant surprises provides peace of mind in the organization and in the accounts. Operationally, the administrative flow is also a big advantage. There are no more additional invoices for service and/or breakdown visits.



MAKING THE DIFFERENCE

Maximum Impact.

Breedweer is the big winner of the contract cleaning maintenance for the OMO schools. OMO chose to write a European tender cleaning maintenance where maximum impact had to be made. As an expert in making an impact, Breedweer clearly made a difference for the school communities that fall under the OMO association. Breedweer was awarded the contract for 7 school communities and therefore aims for maximum impact. Breedweer has been awarded a substantial contract in province of Brabant in the Netherlands (26 locations) and has thus expanded its impact area. From Tilburg, the experts will create maximum impact in Brabant.

KBL Circular Cleaning Center is an important pivot and pioneer in the development towards a Circular Cleaning Netherlands.

With this tender, ICE Robotics together with KBL Circular Cleaning Center has now advised and deployed 14 units of ICE scrubber driers in use at all locations.





Smarter Cleaning. Brighter Future.

ICE Robotics EMEA

Airborne Avenue 55 | NL-2133 LV Hoofddorp | +31 (0)23 20 41 020
info-emea@icerobo.com | www.icerobo.com
Customer Care +31 (0)800 90 99 | cc@icerobo.com