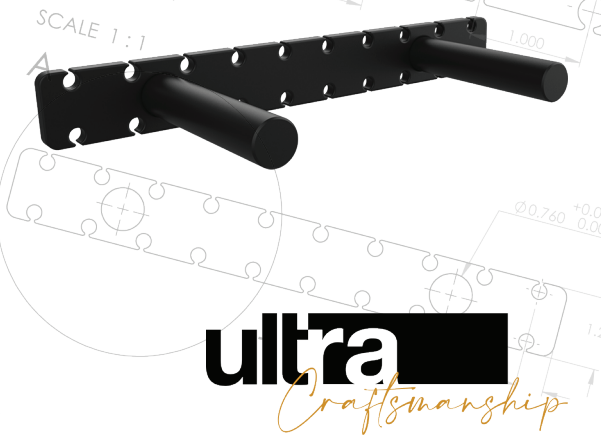


hidden Bracket Installation Guide



Ultra Shelf Tools

Auger Bit



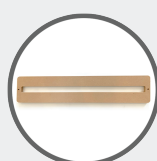
Drilling Jig



Router Bit



Routing Jig



Tools You'll Need

Drill



Measuring Tape



Level



Pencil



Stud Finder



Router



Need More Installation Help?

Contact us using any
of these options.

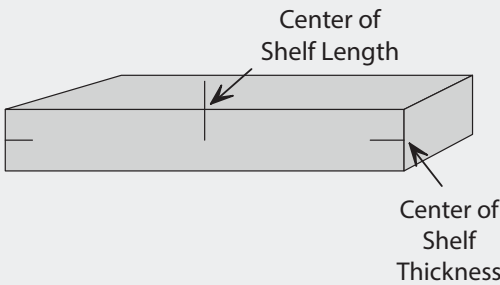
- Email us at support@ultrashelf.com
- Live Chat on our website
- Call 888-523-5575



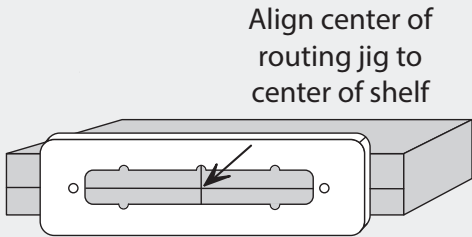
www.ULTRASHELF.com

Drill your shelf for bracket rods (the routing jig is a template to determine the location of drilling jig)

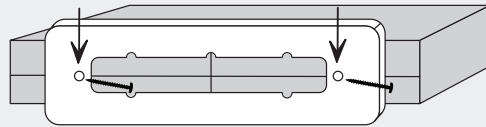
- 1** Measure both the length and thickness of your shelf and mark the center point for each.



- 2** Line up the center of your routing jig to the center of your shelf for both length and thickness (notice center marks on routing jig for aligning).

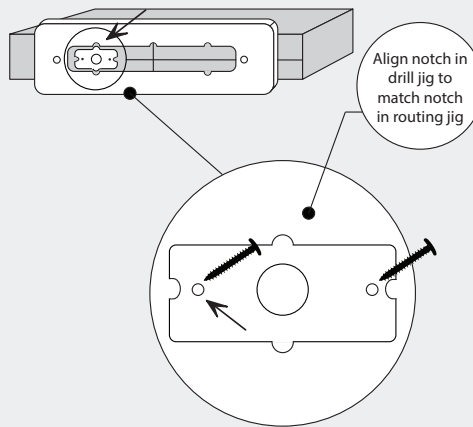


- 3** Secure the routing jig to the shelf using the supplied screws (notice the pre-drilled holes in the routing jig for drilling)



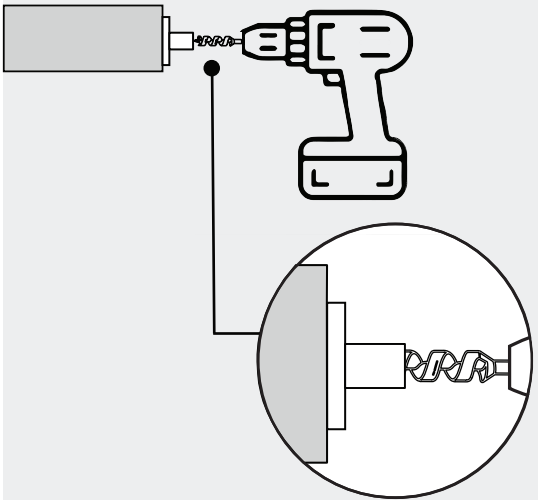
- 4** Align the center of the drilling jig with the notches in the routing jig and secure it to the shelf with supplied screws.

Note: For mantel brackets, rotate the drilling jig to fit vertically inside the routing jig. See mantel bracket tip below for details.



- 5** Using a power drill and an Ultra Shelf Auger Bit, drill the holes for the bracket rods.

Repeat the drilling process for all bracket rods going into your shelf.



- 6** Router your shelf for Recessed Bracket

Leave the routing jig attached.

With your router, carve out the space for your bracket using a 3/4" Diameter x 5/16" deep router bit.

Several passes may be needed to achieve the required depth for your bracket.

- 7** Sand and Stain your Shelf

Now that your shelf is ready for bracket fitting, you can finish sanding and staining it with your desired wood finish. (For stain recommendations, contact our support team!)

Explore Our Bracket Collection

Check out our full range of patent-pending studlock brackets.

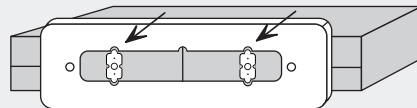
DIY Bracket - (named the "niner" bracket because it's 9/10 of an inch tall) for shelves that are 1-1/2" thick. If you're using dimensional lumber which are 2x6's, 2x8's, 2x10s, and 2x12s then you'll use this bracket. Note: dimensional lumber is 1-1/2" thick even though they are called 2x6's etc. thus the reason for using the 9ER bracket.

Ultra Bracket - for shelves that are 1-3/4" to 2-3/4" thick. These are for most shelves that are made from hardwoods such as walnut, oak, alder, maple, and others. This is our most popular bracket.

The Mantel Bracket - for shelves 3" and thicker.

Mantel Bracket Tip

For mantel brackets, the drilling jig fits vertically into the routing jig.



Mount Bracket to Wall

Continue on backside for instructions.



For more information contact our customer service team at support@ultrashelf.com or by phone 888-523-5575.