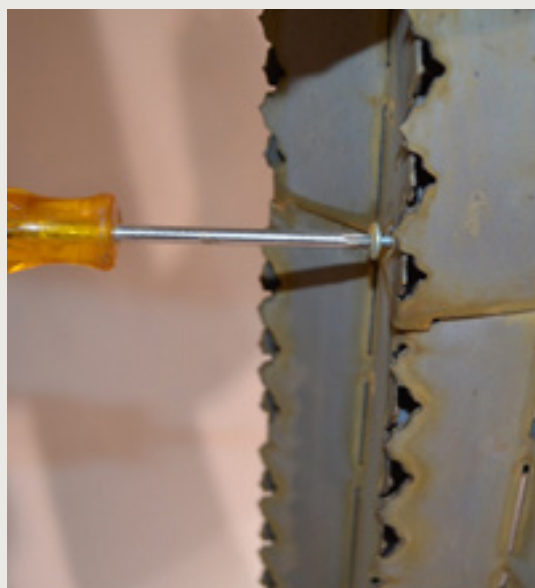




Saguaro Torch Manual



1 Slide top half over tabs in bottom half. Bottom tabs go inside top half.

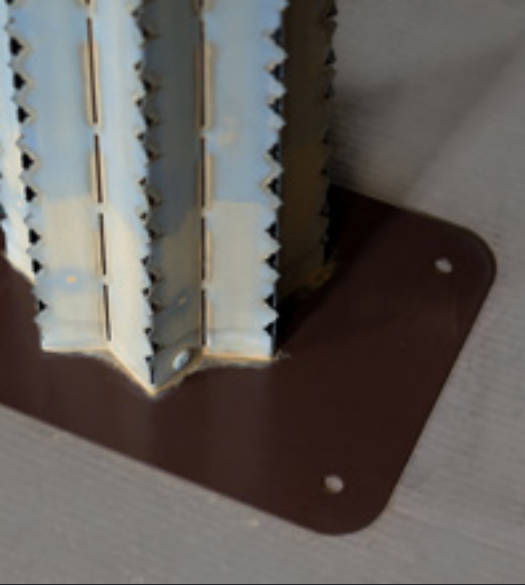


2 Secure tabs with the three (3) included screws.



3 Slide arms into slots on sides of trunk. Either arm can go on either side. Additional help on next page.

Continued on next page



4 Mount to concrete pad, patio or deck with minimum size of 15"x20"x4"D or stake down with 12" galvanized stake. When mounting to concrete use concrete anchors (found at most hardware stores)

Trouble Fitting Arms on Cactus?

If the tabs do not align with slots, place hands inside on each side of the opening of the arm and pull outward to widen and align the tabs. Do not bend the tabs themselves.

Base Plate

Ensure piece is ALWAYS at or above ground level, especially pieces mounted to a concrete pad. Pad MUST be at or above ground level. DO NOT cover base plate with more than 1" of mulch or other ground covering. Ensure water does not pool around base of piece.

Maintenance

It is normal for weld spots to turn a rust color. No maintenance, coatings, or other treatments needed.

Filling

Use citronella torch fuel or other suitable torch fuel, such as lamp oil (not for use with propane). Unscrew flame guard & wick. Keep torch wick inserted in metal flame guard while filling. Never use gasoline, alcohol or solvents.

Lighting

Allow wick to become completely saturated before lighting. To extend run time, check fuel level frequently to ensure wick stays saturated while burning. Make sure wick does not extend higher than 1.5" above canister.

Placement

Place the canisters inside the top of each arm (3).

Warning

Keep out of reach of children. Burn torch within sight & NEVER leave unattended. Never place near anything that can catch fire.

